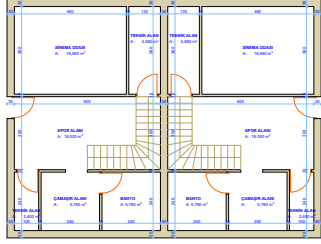


## BODRUM KAT PLANI



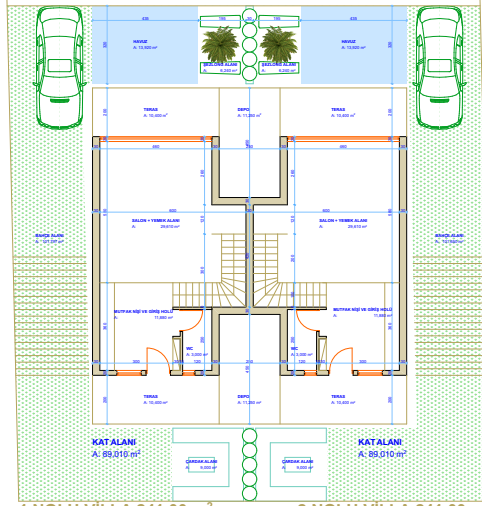
1 NOLU VİLLA 241,00 m<sup>2</sup>

2 NOLU VİLLA 241,00 m<sup>2</sup>

## İZMİR - MENEMEN - MALTEPE İKİZ VİLLA PROJESİ



## ZEMİN KAT PLANI

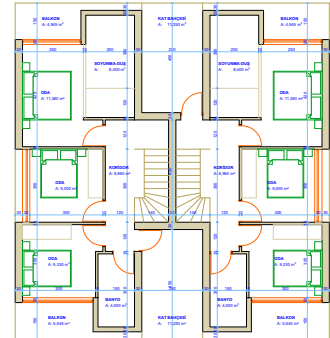


1 NOLU VİLLA 241,00 m<sup>2</sup>

2 NOLU VİLLA 241,00 m<sup>2</sup>



## BİRİNCİ KAT PLANI



1 NOLU VİLLA 241,00 m<sup>2</sup>

2 NOLU VİLLA 241,00 m<sup>2</sup>



294 ADA 2 PARSEL 400,96 m<sup>2</sup>  
1 NOLU VİLLA 241,00 m<sup>2</sup>  
(BODRUM KAT + ZEMİN KAT + BİRİNCİ KAT)  
2 NOLU VİLLA 241,00 m<sup>2</sup>  
(BODRUM KAT + ZEMİN KAT + BİRİNCİ KAT)  
TOPLAM İNŞAAT ALANI 482,00 m<sup>2</sup>